



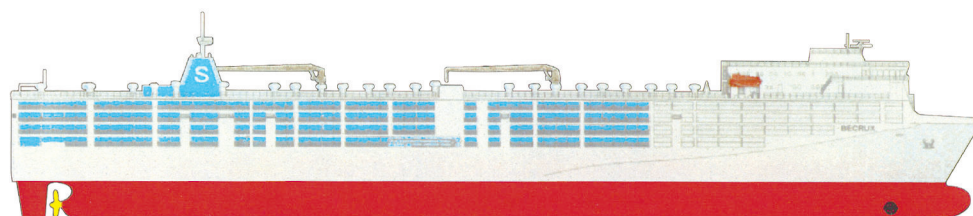
Main Data






Port of registry	GENOVA
Off.number	35RI
Call signz	1BGF
Standard B	Available
Standard C	Available
Classification Society	R.I.NA 78293
IMO number	9232852
Class	100 A 1.1-MN-LSC-NAV.IL-IAQ1
Speed	20 Knots
Main engine	11060 Kw (15027 Bhp) - 127 rpm
Main engine type	Man B. & W. 7S50MC-C
Diesel generators	2 Nosx 1280 Kw Man B. & W. 8L23/30 2 Nosx 1120 Kw Man B. & W. 7L23/30
Livestock secondary source of power	1 No. Man B. & W. 6L23/30
Bow thruster	LIPS - 1000 Kw
Year of built	2002 - Croatia
Cargo space fans	N. 84 reversible blowers
Cargo space ventilation	N. 60 airchanges per hour capacity
Fresh water capacity	2740 t.
Fresh water system	Automatic with float in troughs in each pen
Fresh water generators	4 Nos. reverse osmosis 150 t/day each + Atlas 25/tday
Fodder capacity	5200 m ³
Fodder distribution system	Automatic feed with 3 troughs each pen
Fuel (IFO380) capacity	1934 m ³
Diesel oil capacity	178 m ³
Daily consumption	45 t/day IFO 380
Loading ramp length	12 m. over all
Loading passages	1 port + 1 starboard 6 deck 1 port + 1 starboard 7 deck 1 port + 1 starboard 8 deck 1 port + 1 starboard 9 deck
Cranes	2 Nos. hydraulic - SLW 1 t. each - 13 m.

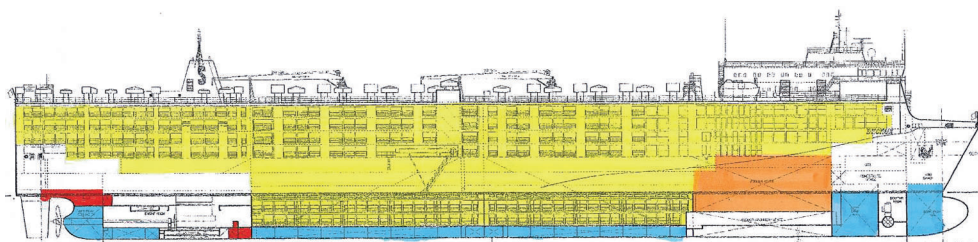
Total cargo capacity

	Sheep	Cattle
Pens.	779,00	1416,00
MQ.	24021,15	23858,97
Sq. feet	258227,36	256483,93

Lenght overall	176,70 m.
Breadth	31,10 m.
Summer draft	8,20 m.
Gross registered tonn.	29770
Net registered tonn.	10973
Suez registered tonn.	33774,14 (gross)/31476,99 (net)
D.W.T.	13400



	Pens
	Ventilation
	Silos
	Fresh water
	Fuel-gas oil

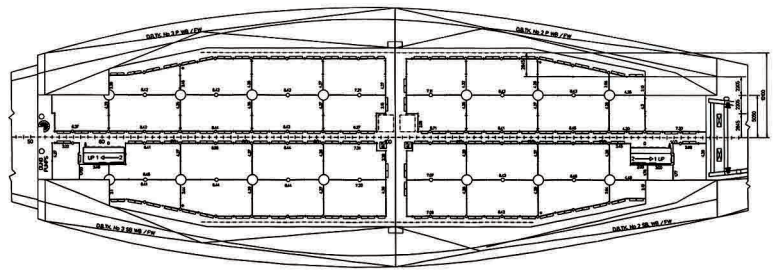


Siba Ships S.p.A.
 via Aldo Moro, 13 Palazzo Mercurio
 25124 Brescia (Italy)
 Tel. (+39) 03022911
 Fax (+39) 030224563
 Telex 305333 sibabsi
 E-mail info@sibaships.com

M/V BECRUX

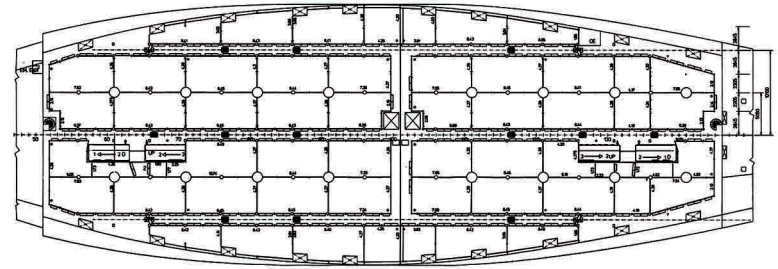
DECK 1 Enclosed

	Sheep	Cattle
Pens.	38,00	68,00
MQ.	1045,63	1039,44
Sq. feet	11240,52	11173,98
Pat	244,64	246,98



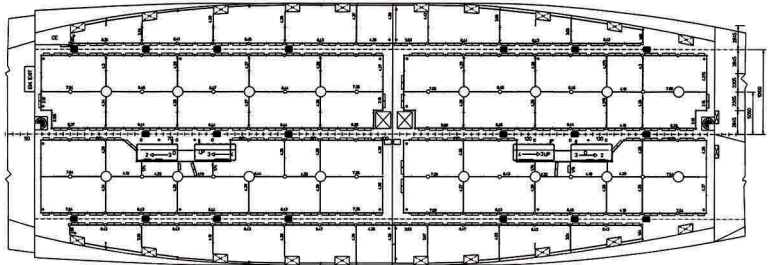
DECK 2 Enclosed

	Sheep	Cattle
Pens.	56,00	98,00
MQ.	1493,89	1486,25
Sq. feet	16059,31	15977,19
Pat	295,18	298,33



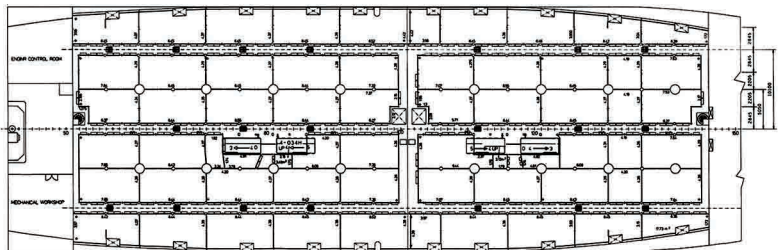
DECK 3 Enclosed

	Sheep	Cattle
Pens.	61,00	108,00
MQ.	1669,09	1660,32
Sq. feet	17942,71	17848,44
Pat	296,64	299,76



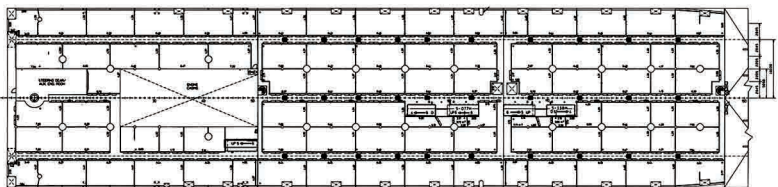
DECK 4 Enclosed

	Sheep	Cattle
Pens.	63,00	113,00
MQ.	1806,35	1796,85
Sq. feet	19418,26	19316,14
Pat	277,19	280,04



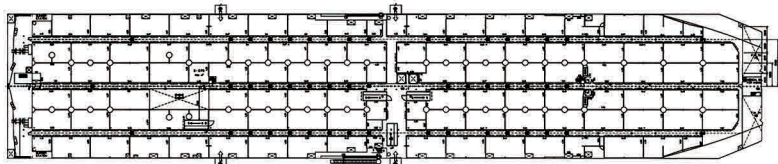
DECK 5 Enclosed

	Sheep	Cattle
Pens.	88,00	156,00
MQ.	2632,20	2596,57
Sq. feet	28296,15	27913,13
Pat	315,95	320,35



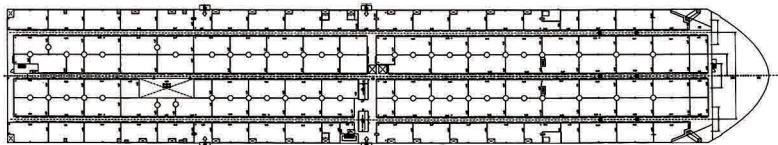
DECK 6 Open

	Sheep	Cattle
Pens.	109,00	204,00
MQ.	3458,32	3438,86
Sq. feet	37176,94	36967,75
Pat	345,52	349,76



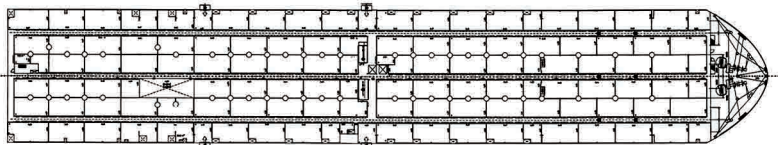
DECK 7 Open

	Sheep	Cattle
Pens.	120,00	221,00
MQ.	3836,59	3810,87
Sq. feet	41243,34	40966,85
Pat	213,26	216,13



DECK 8 Open

	Sheep	Cattle
Pens.	122,00	223,00
MQ.	3937,55	3915,19
Sq. feet	42328,66	42088,29
Pat	230,23	233,18



DECK 9 Open

	Sheep	Cattle
Pens.	122,00	223,00
MQ.	3959,96	3938,29
Sq. feet	42569,57	42336,62
Pat	178,47	180,87

